



# **Internet Web Application**

## **Manual**



## **Introduction**

Seafirst Marine Services Pte Ltd is the in-house logistics department of Sinwa Limited. Besides cargo handling for the sister companies Sinwa Singapore Pte Ltd, Windsor Marine Pte Ltd and Sinwa Offshore Pte Ltd, Seafirst Marine Services specializes in cargo handling for the clients of the above companies.

The above cargo volume combined represent more than 350 Tons of airfreight, seafreight and courier shipments on a yearly basis. Together with a team of reliable marine specialised agents world-wide, Seafirst Marine Services guarantees smooth and worry-free transit of Ships Spares around the globe.

## **This manual**

This manual is for the Internet Web Application “E-Business” – Marine Logistics Module.

## **Login and Password**

A login and password is available on request from [marketing@sinwaglobal.com](mailto:marketing@sinwaglobal.com), only for clients of Sinwa Limited or its subsidiaries.



## Login

Clients can login through the various websites of the subsidiaries, or directly through the website [www.seafirstmarine.com](http://www.seafirstmarine.com)

*On the website a similar login facility can be found for your login. Please enter your assigned Login and Password and click the Login-button to be re-directed.*

Client Login / Track & Trace

Login:

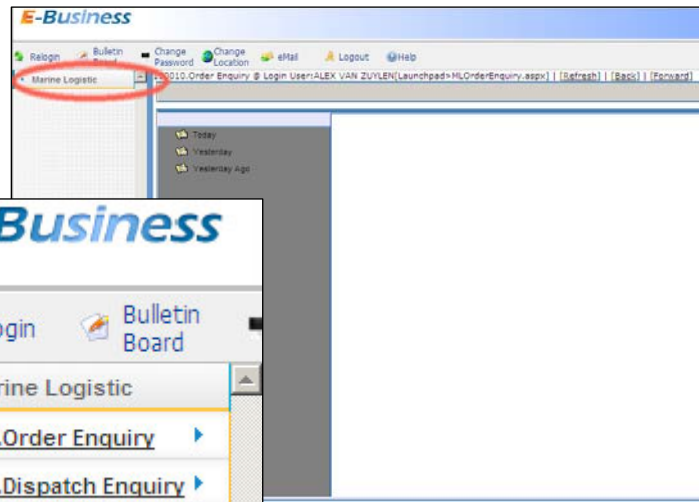
Password:

Don't you have a Login yet?  
Track & Trace Manual

## Main screen

When access is granted, you will see the following screen in your web browser.

*Click on "Marine Logistics"*



*A new menu will open*



## Order Enquiry & Dispatch Enquiry

Click on “Order Enquiry” to trace your orders on import level into Seafirst’s warehouse.

Click on “Dispatch Enquiry” to trace your exports from Seafirst’s warehouse.

Schematically it looks like this:



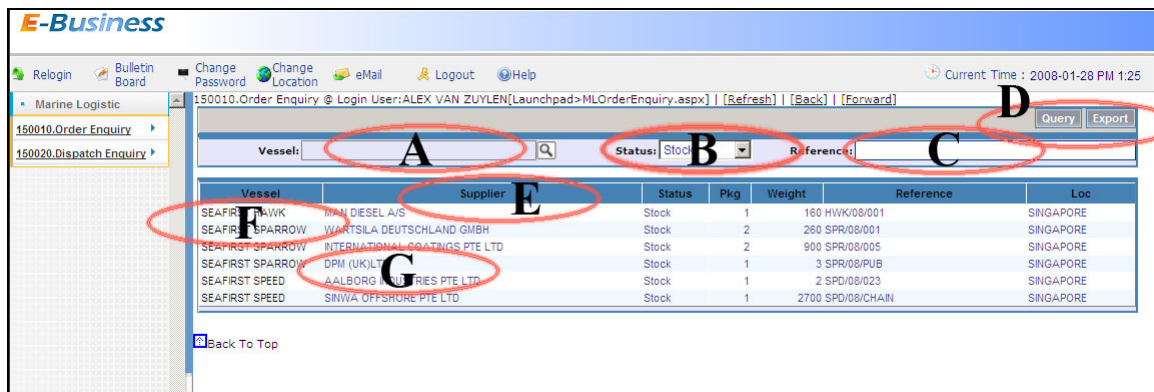


## **Part 1 – Order Enquiry**

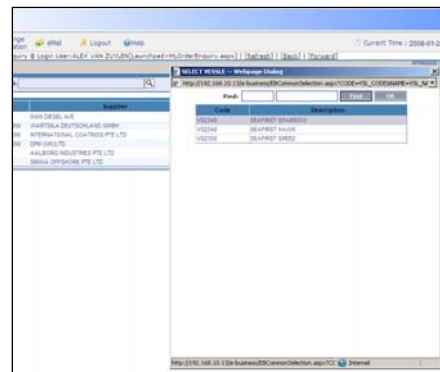
## Order Enquiry

When **150010.Order Enquiry** is selected the following screen is shown

- A) Search orders by vessel name
- B) Search orders by status
- C) Search orders by reference
- D) Start search / Export results
- E) Sort by column
- F) Order details
- G) Attachment details

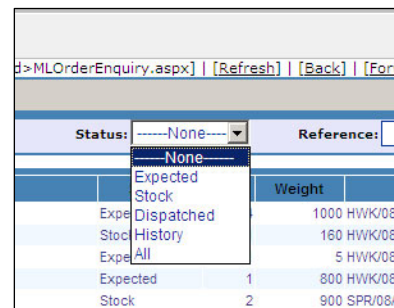


- A) Click here to select your vessel name.  
Click on **Query** to start the search



- B) Click here to select by Status  
Click on **Query** to start the search

- *Expected: the order is expected to arrive*
- *Stock: the order is on stock in the warehouse*
- *Dispatched: the order has been exported*
- *History: the order has been exported and invoiced*





C) Click here to search by order reference  
Click on **Query** to start the search

Current Time : 2008-01-28 PM 5:33

[Back] | [Forward]

Query Export

Reference: SPR/08/005

D) Click here **Query** to start search options or **Export** to print stocklists in Exel format.

E) Click on column headers to sort by that column.

F) Click on the vessel name to view order details  
Below screen will be shown and more option are available.

Change Location | eMail | Logout | Help | Current Time : 2008-01-28 PM 5:33

Order Detail @ Login User: ALEX VAN ZUYLEN [Launchpad > MLOrderDtl.aspx] | [Refresh] | [Back] | [Forward]

Basic Information	
Order No:	SRN2008010554
Status:	Stock
Vessel:	SEAFIRST HAWK
Supplier:	MAN DIESEL A/S
Pkg:	1
Arrive Flag:	Arrived
AWB No:	61812124545
Attach No:	93401
Description:	HWK/08/001
Date:	28/01/2008
Stock Date:	28/01/2008
Type:	Stock
Transport:	
Weight:	160
Arrive By:	SQ830
Permit No:	ME001
Dispatch No:	

Remark

Attachment List		
Description	File Name	Upload User
AWB	2008010554SRN_2.PDF	ALEX V. ZUYLEN

- 1) Click here so view supplier details
- 2) Click here to open attachments (AWB, BL, Pictures, DN)

Change Location | eMail | Logout | Help | Current Time : 2008-01-28 PM 5:33

Order Detail @ Login User: ALEX VAN ZUYLEN [Launchpad > MLOrderDtl.aspx] | [Refresh] | [Back] | [Forward]

Basic Information	
Order No:	SRN2008010554
Status:	Stock
Vessel:	SEAFIRST HAWK
Supplier:	MAN DIESEL A/S
Pkg:	1
Arrive Flag:	Arrived
AWB No:	61812124545
Attach No:	93401
Description:	HWK/08/001
Date:	28/01/2008
Stock Date:	28/01/2008
Type:	Stock
Transport:	
Weight:	160
Arrive By:	SQ830
Permit No:	ME001
Dispatch No:	

Supplier Information	
Country:	DENMARK
City:	FREDERIKSHAVN
Tel:	+45 34 893300
Email:	alpha@dk.manbo.com
Address:	NIELS RUELIS VEJ 15
Address:	FREDERIKSHAVN
Address:	DENMARK DK-9900
State:	DK-9900
Fax:	

Remark

Attachment List		
Description	File Name	Upload User
AWB	2008010554SRN_2.PDF	ALEX V. ZUYLEN



G) Click on a row to view if any attachments available.

Change Password   Change Location   eMail   Logout   Help   Current Time : 2008-01-28 PM 1:32

150010.Order Enquiry @ Login User:ALEX VAN ZUYLEN[Launchpad>MLOrderEnquiry.aspx] | [Refresh] | [Back] | [Forward]

Query   Export

Vessel:    Status:    Reference:

Vessel	Supplier	Status	Pkg	Weight	Reference	Loc
SEAFIRST HAWK	JOTUN (SINGAPORE) PTE LTD	Expected	4	1000	HWK/08/003	SINGAPORE
SEAFIRST HAWK	MAN DIESEL A/S	Stock	1	160	HWK/08/001	SINGAPORE
SEAFIRST HAWK	KELVIN HUGHES LIMITED	Expected	1	5	HWK/08/002 CHARTS & PUBLICATIONS	SINGAPORE
SEAFIRST HAWK	BARWIL UNITOR SHIP SERVICES	Expected	1	800	HWK/08/004	SINGAPORE
SEAFIRST SPARROW	INTERNATIONAL COATINGS PTE LTD	Stock	2	900	SPR/08/005	SINGAPORE
SEAFIRST SPARROW	SINWA (SINGAPORE) PTE LTD	Expected	12	6000	SPR/08/PROV	SINGAPORE
SEAFIRST SPARROW	MAN-B&W DIESEL A/S	Expected	2	630	SPR/08/003	SINGAPORE
SEAFIRST SPARROW	WARTSILA DEUTSCHLAND GMBH	Stock	2	260	SPR/08/001	SINGAPORE
SEAFIRST SPARROW	DPM (UK)LTD	Stock	1	3	SPR/08/PUB	SINGAPORE
SEAFIRST SPEED	SINWA OFFSHORE PTE LTD	Stock	1	2700	SPD/08/CHAIN	SINGAPORE
SEAFIRST SPEED	AALBORG INDUSTRIES PTE LTD	Stock	1	2	SPD/08/023	SINGAPORE
SEAFIRST SPEED	ALFA LAVAL TUMBA, AB	Expected	4	195	SPD/08/025	SINGAPORE
SEAFIRST SPEED	SINWA (SINGAPORE) PTE LTD	Expected	3	1500	SPD/08/STORES	SINGAPORE

**Attachment List**

Description	File Name	Upload User
AWB	2008010554SRN_2.PDF	ALEX V. ZUYLEN

Back To Top



## **Part 2 – Dispatch Enquiry**



## Dispatch Enquiry

When [150020.Dispatch Enquiry](#) is selected the following screen is shown

- A) Search orders by vessel name
- B) Start date of the search
- C) End date of the search
- E) View dispatch details
- F) Select row for more details

Dispatch No	Dispatch Date	Vessel	Transport
SDN2008010290	28/01/2008	SEAFIRST SPARKO	TRUCK
SDN2008010291	28/01/2008	SEAFIRST SPEED	AIRFREIGHT
SDN2008010292	28/01/2008	SEAFIRST HAWK	BARGE

A) Click here and select the vessel you want details for.

Click on [Query](#) to start the search

B & C) Enter the “from” and “to” dates to view operations within these dates.

Click on [Query](#) to start the search.



D) Click here to view details of the dispatch.

150002.Dispatch Order Detail @ Login User:ALEX VAN ZUYLEN[Launchpad>MLDOrderDtl.aspx] | [Refresh] | [Back] | [Forward]

Vessel	Supplier	Pkg	Weight	Reference	Loc
SEAFIRST SPEED	AALBORG INDUSTRIES PTE LTD	1	2	SPD/08/023	SINGAPORE
SEAFIRST SPEED	ALFA LAVAL TUMBA AB	4	195	SPD/08/025	SINGAPORE
SEAFIRST SPEED	SINWA OFFSHORE PTE LTD	1	2700	SPD/08/CHAIN	SINGAPORE
SEAFIRST SPEED	SINWA (SINGAPORE) PTE LTD	3	1500	SPD/08/STORES	SINGAPORE
		9.00	4,397.00		

**Basic Information**

Dispatch No:	SDN2008010291	Date:	28/01/2008
Status:	Dispatch	Transport:	AIRFREIGHT
Vessel:	SEAFIRST SPEED	Attach No:	93601
AWB No:	61878456974	Permit No:	

**Consignee Information: SINWA SHANGHAI SHIP SUPPLY CO LTD**

Country:	CHINA PEO REP OF	State:	
City:	SHANGHAI	Zip:	200433
Tel:	+86-21 6530 5050	Fax:	+86-21 6518 6152
Email:	shanghai@sinwaglobal.com		
Address1:	NO. 9A XIANG YIN ROAD		
Address2:	YANG PU DISTRICT		
Address3:	SHANGHAI		
Address4:	CHINA PEO REP OF 200433		

**Schedule**

Carrier	ETD	Origin	Destination	ETA
SQ880	1/28/2008 12:00:00 AM	SINGAPORE	SHANGHAI	1/30/2008 12:00:00 AM

**Attachment List**

Description	File Name	Upload User
AWB	2008010291SDN_2.PDF	ALEX V. ZUYLEN

- 1) In this section all orders in this dispatch are listed. Click on the vessel name to view details for each order separately.
- 2) The basic information shows how orders were dispatched
- 3) Consignee information
- 4) Schedule
- 5) Click on the attachment to view AWB/BL or delivery notes



E) Click on the row to get more info

150020.Dispatch Enquiry @ Login User:ALEX VAN ZUYLEN[Launchpad>MLDispatchOrderEnquiry.aspx] | [Refresh] | [Back] | [Forward] | Query | Export

Vessel: [Search] Date From: 30/10/2007 Date To: 28/01/2008

Dispatch No	Dispatch Date	Vessel	Transport
SDN2008010290	28/01/2008	SEAFIRST SPARROW	TRUCK
SDN2008010291	28/01/2008	SEAFIRST SPEED	AIRFREIGHT
SDN2008010289	28/01/2008	SEAFIRST HAWK	BARGE

2 Marine Logistics Orders

Vessel	Supplier	Date	Pkg	UOM	Weight	Reference	Loc
SEAFIRST SPARROW	WARTSILA DEUTSCHLAND GMBH	28/01/2008	2	PKG	280	SPR/08/001	SINGAPORE
SEAFIRST SPARROW	MAN-B&W DIESEL A/S	28/01/2008	2	PCS	630	SPR/08/003	SINGAPORE
SEAFIRST SPARROW	DPMI (UK)LTD	28/01/2008	1	PKG	3	SPR/08/PUB	SINGAPORE
SEAFIRST SPARROW	INTERNATIONAL COATINGS PTE LTD	28/01/2008	2	PAT	900	SPR/08/005	SINGAPORE
SEAFIRST SPARROW	SINWA (SINGAPORE) PTE LTD	28/01/2008	12	PAT	6000	SPR/08/PROV	SINGAPORE

3 Attachment List

Description	File Name	Upload User
DELIVERY NOTE	2008010290SDN_2.PDF	ALEX V. ZUYLEN

- 1) When the row is selected (1), new information becomes available
- 2) The orders in this dispatch
- 3) The attachments available for this dispatch

For each of the orders more details can be obtained by clicking the vessel name.

END OF THIS MANUAL

If you need more information, please do not hesitate to contact us.